

# SOLID AREA 2.0/4.0/5.0 – RAMA MONTAŻOWA

Głębokość montażowa [mounting depth]:

Solid Area 2.0 - 120mm

Solid Area 4.0 - 125mm

Solid Area 5.0 - 125mm

Dotyczy opraw [applies to frames]:

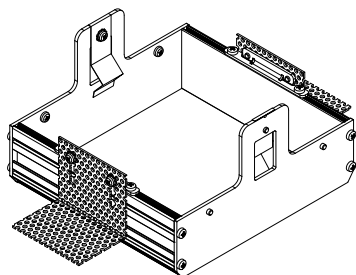
4.2103

4.2104

4.2105

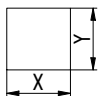
UWAGA: Nie podłączać oprawy oświetleniowej do zasilacza LED przy włączonym zasilaniu!!! Podłączenie oprawy oświetleniowej do zasilacza przy włączonym zasilaniu grozi uszkodzeniem modułu LED i utratą gwarancji.

NOTE: Do not connect the lighting fixture to the LED driver with the power on !!! Connecting the lighting fitting to the LED driver with the power switched on may damage the LED module and void the warranty.

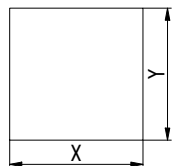


## ROZSTAW OTWORÓW MONTAŻOWYCH OPRAWY [mounting holes spacing]

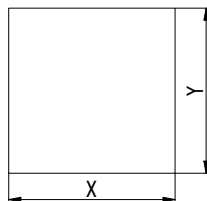
Solid Area 2.0 WP  
X=202 [mm]  
Y=193 [mm]



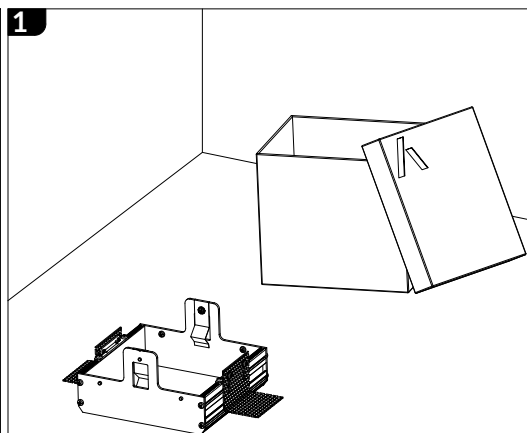
Solid Area 4.0 WP  
X=423 [mm]  
Y=416 [mm]



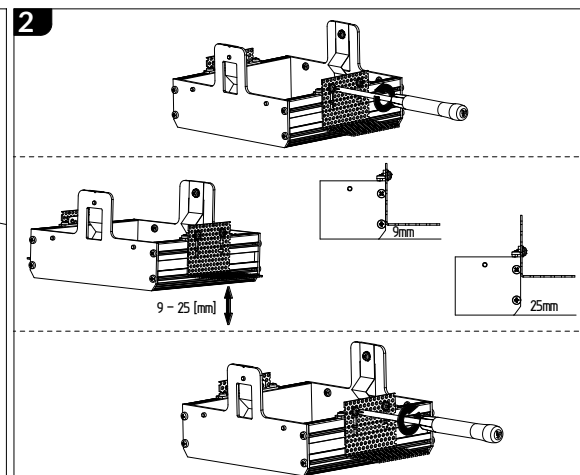
Solid Area 5.0 WP  
X=528 [mm]  
Y=521 [mm]



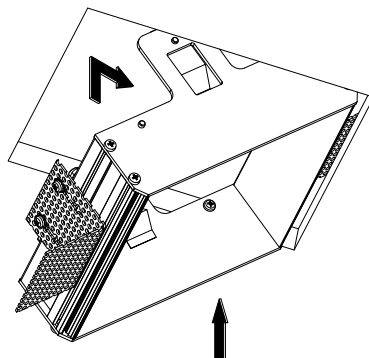
1



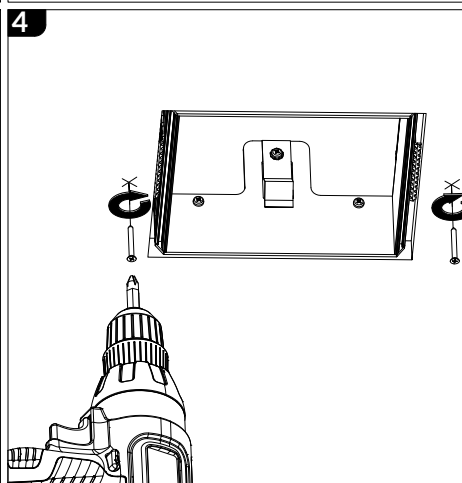
2



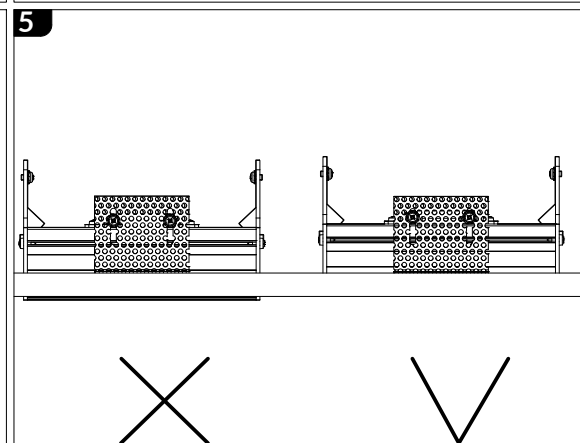
3



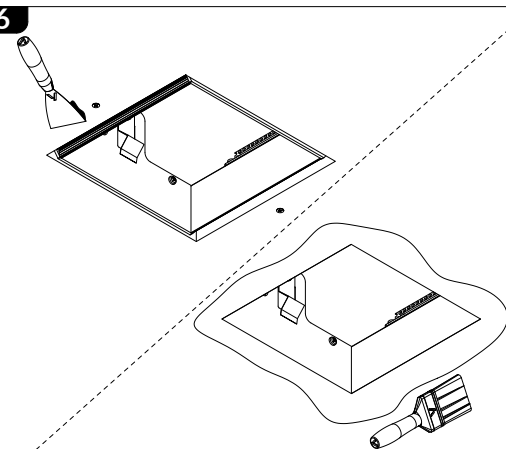
4



5



6



7

