

Texo Single R60 Pro LED

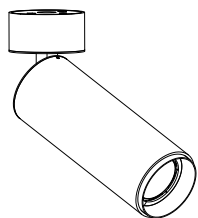
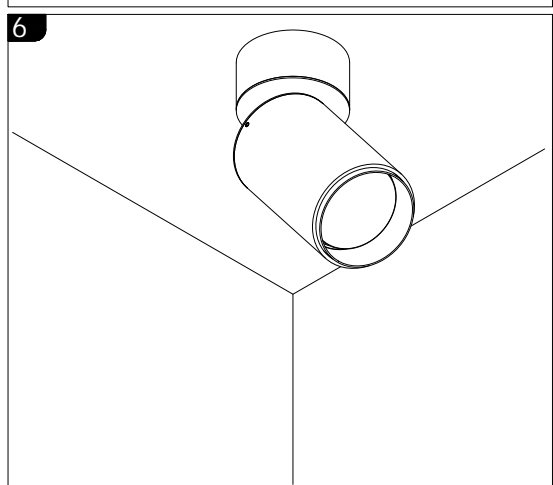
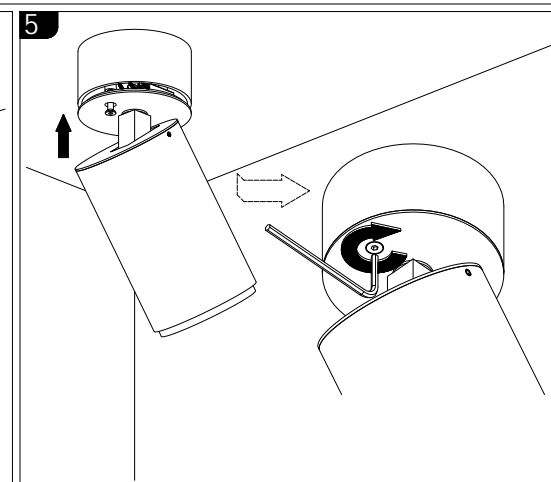
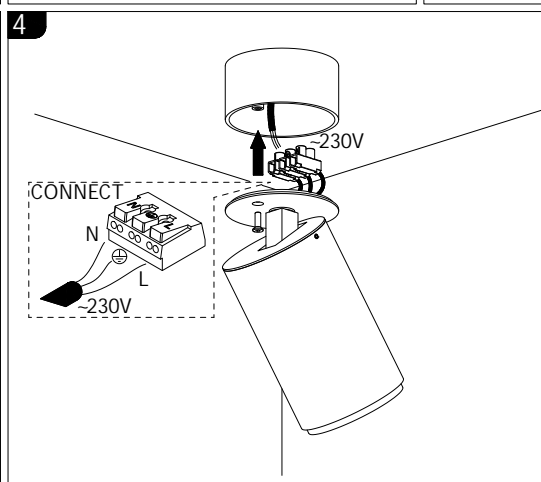
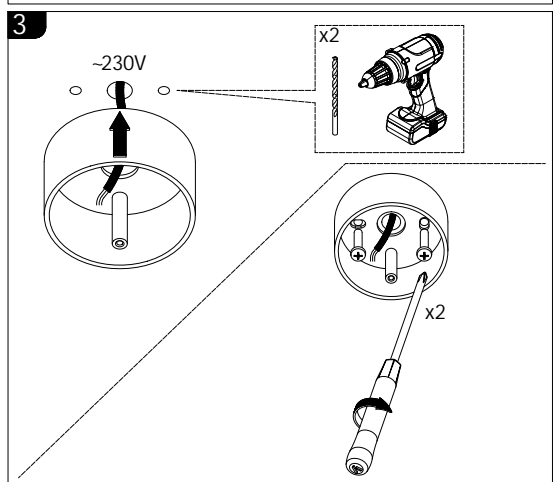
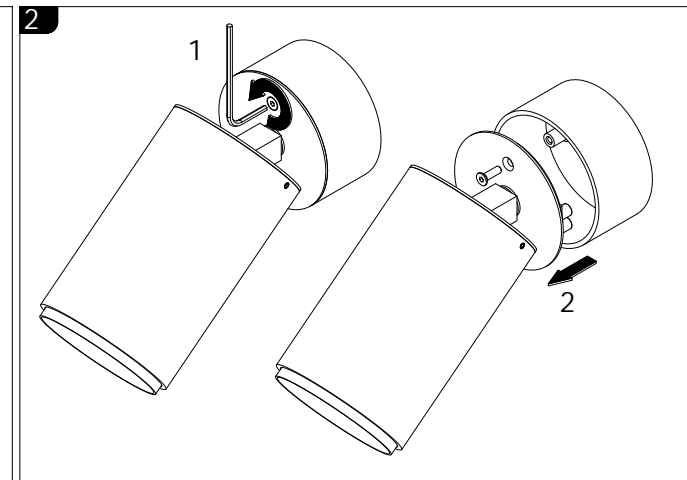
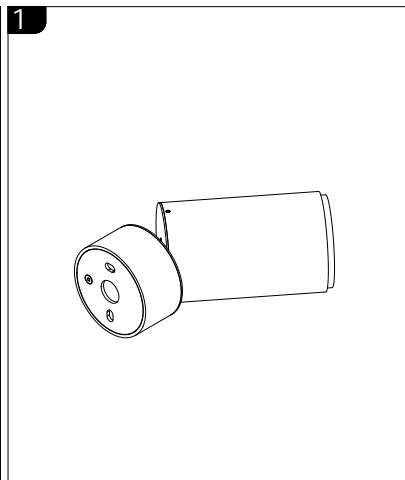
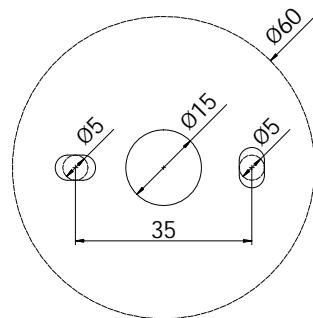


Podstawowe dane techniczne:

Zasilanie / Power Supply:
230V 50/60Hz
Oprawka / holder: GU10

Dotyczy opraw / Applies to frames:
Texo Single Pro NT 2.1027
Texo Single Cut Pro NT 2.1033

ROZSTAW OTWORÓW MONTAŻOWYCH OPRAWY
MOUNTING HOLES SPACING



LABRA

LABRA Sp. z o.o.
biuro@labra.pl / export@labra.pl
+48 500 175 552 / www.labra.pl