

Track Recessed 3F

SUSPENSION SETS

Podstawowe dane techniczne / Basic technical data:

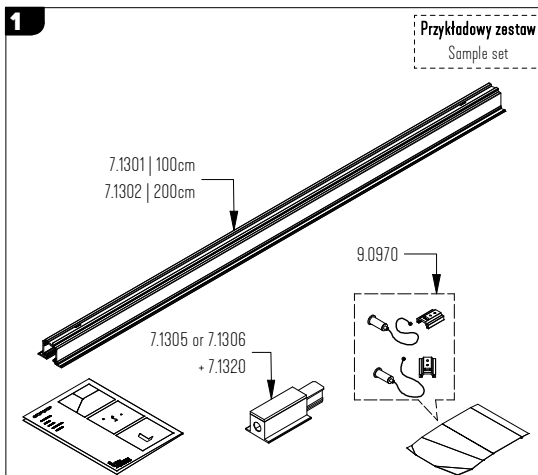
Zasilanie / Feed AC 230V 50/60Hz
 Zasilacz / Power supply Nie
 Źródło światła / Light source
 CRI / Color rendering index
 Moc / Power

Dotyczy opraw / Applies to frames:

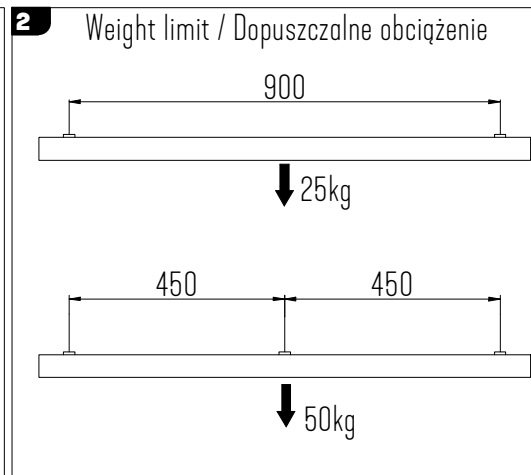
Recessed Track 3F 100cm | 7.1301
 Recessed Track 3F 200cm | 7.1302
 End Feed - L | 7.1305
 End Feed - R | 7.1306
 Recessed cover for end feed | 7.1320
 Pendant mounting | 9.0970



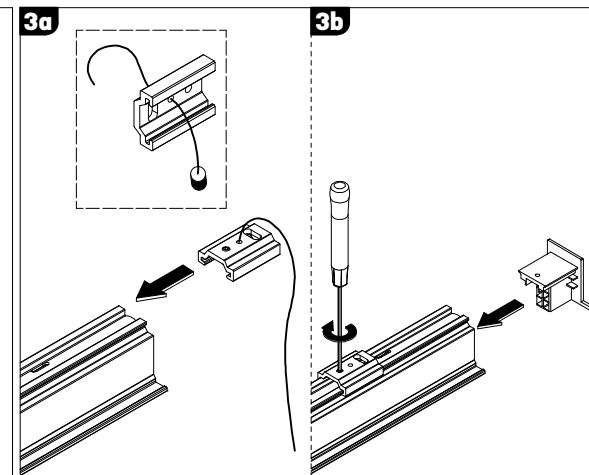
1



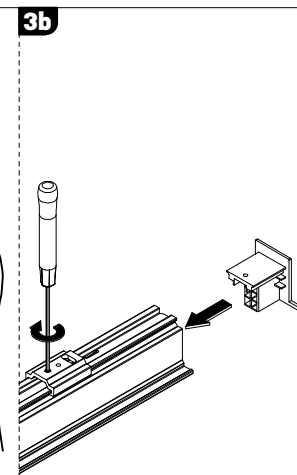
2



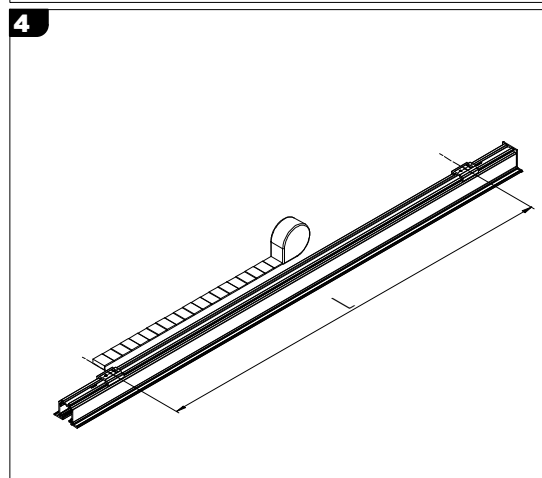
3a



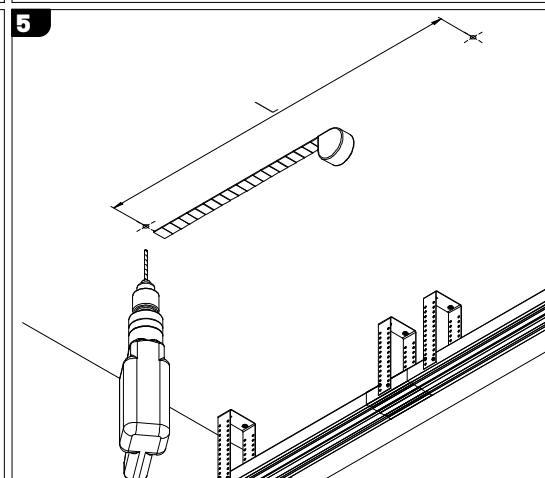
3b



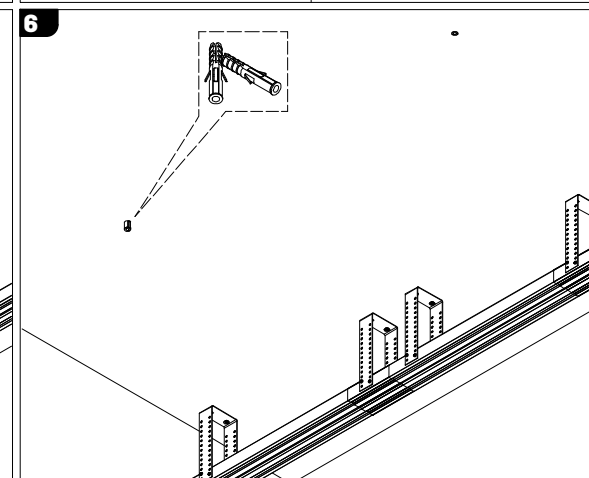
4



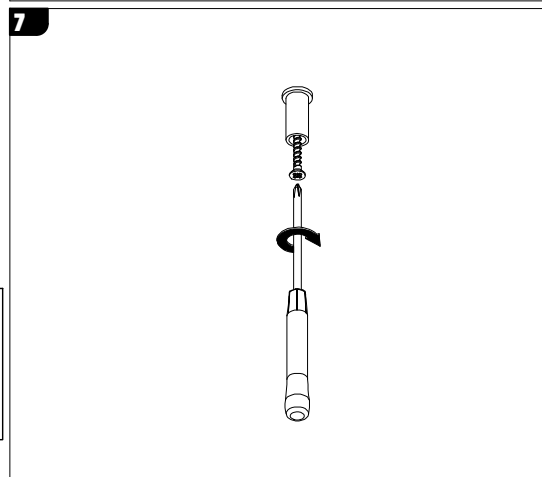
5



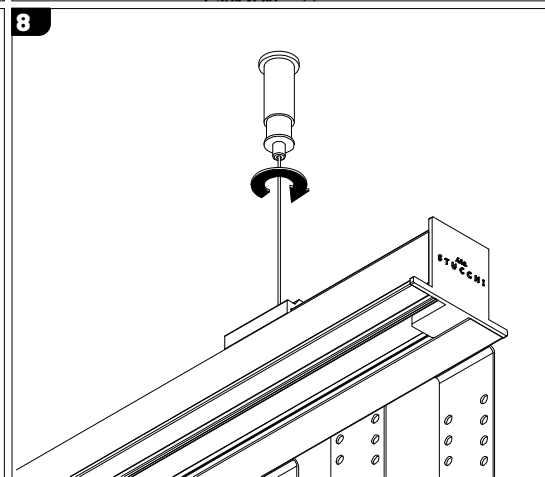
6



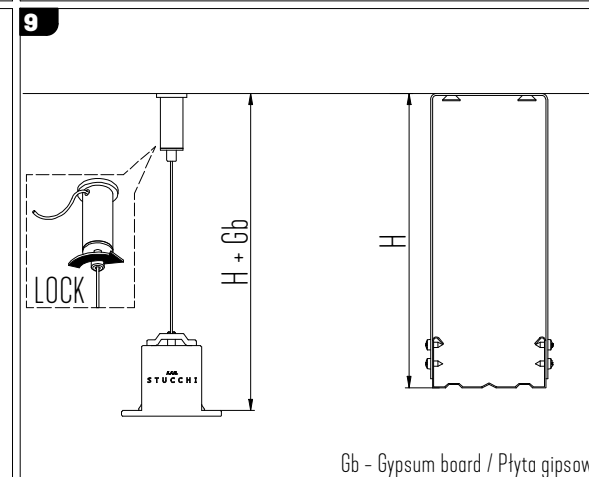
7



8



9



UWAGA 1: Nie podłączać oprawy oświetleniowej do zasilacza LED przy włączonym zasilaniu!!! Podłączenie oprawy oświetleniowej do zasilacza przy włączonym zasilaniu grozi uszkodzeniem modułu LED i utratą gwarancji.

NOTE 1: Do not connect the lighting fixture to the LED driver with the power on!!! Connecting the lighting fitting to the LED driver with the power switched on may damage the LED module and void the warranty.

LABRA Sp. z o.o.

bureau@labra.pl / export@labra.pl
 +48 500 175 552 / www.labra.pl



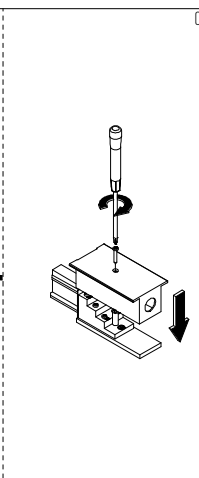
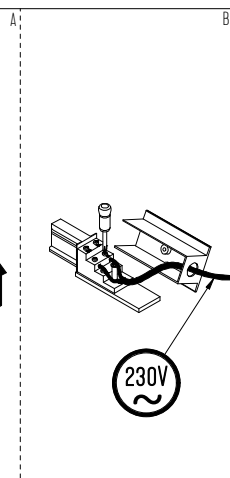
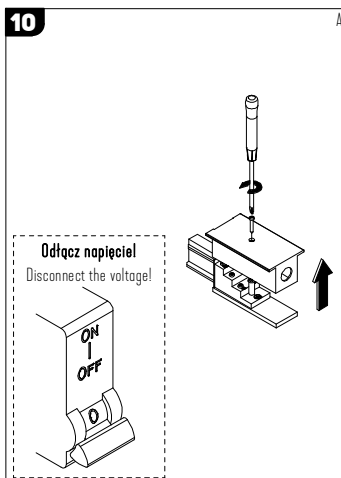
Gb - Gypsum board / Płyta gipsowa

Track Recessed 3F

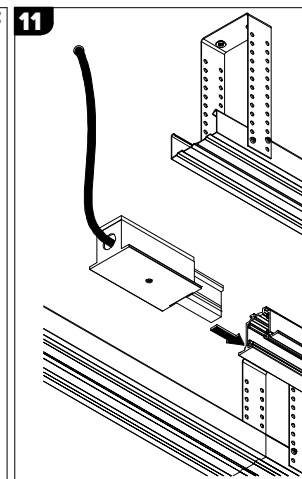
SUSPENSION SETS

1/1

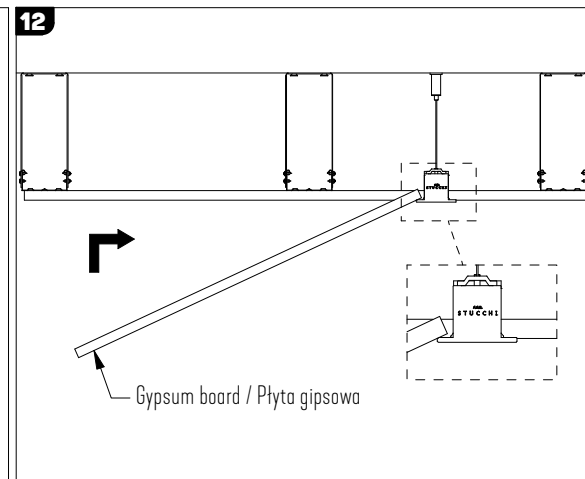
10



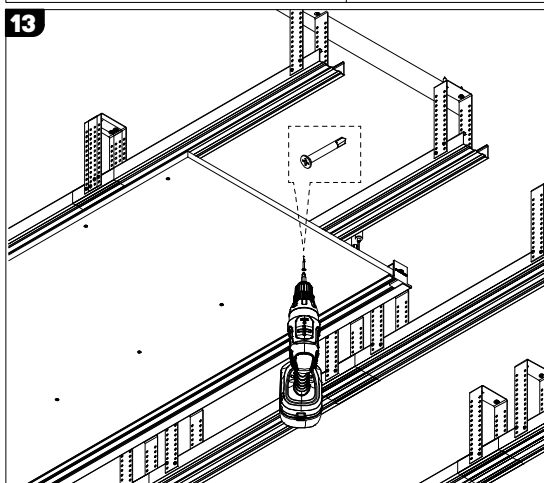
11



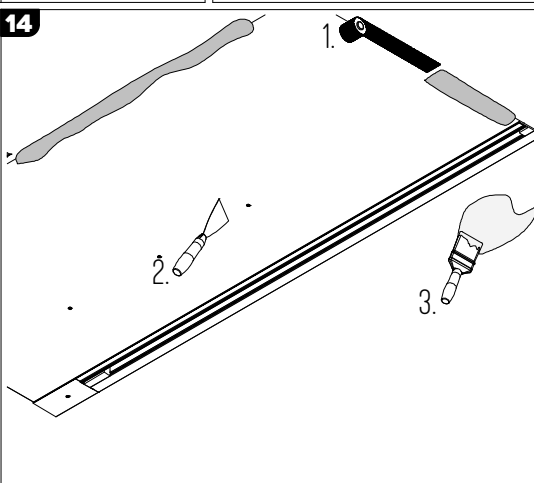
12



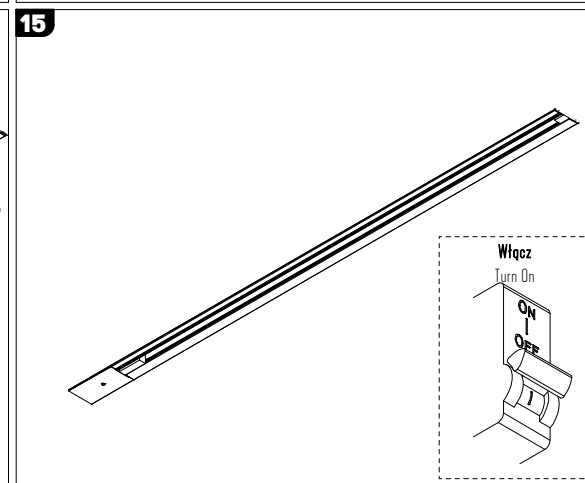
13



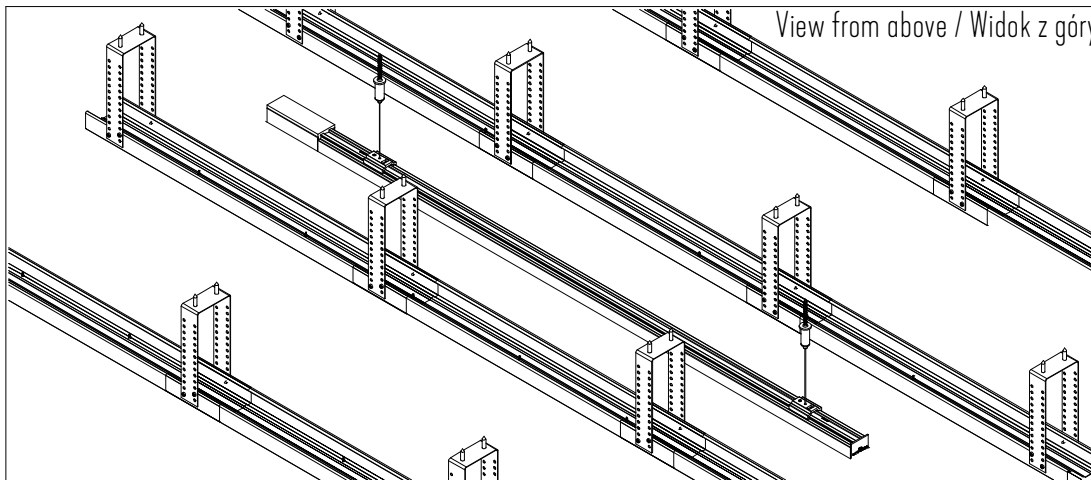
14



15



View from above / Widok z góry



More accessories are available on the website:

www.aagstucchi.en

Więcej akcesoriów jest dostępnych na stronie internetowej:

www.aagstucchi.en

UWAGA 1: Nie podłączać oprawy oświetleniowej do zasilacza LED przy włączonym zasilaniu!!! Podłączenie oprawy oświetleniowej do zasilacza przy włączonym zasilaniu grozi uszkodzeniem modułu LED i utratą gwarancji.

NOTE 1: Do not connect the lighting fixture to the LED driver with the power on!!! Connecting the lighting fitting to the LED driver with the power switched on may damage the LED module and void the warranty.

LABRA Sp. z o.o.

bureau@labra.pl / export@labra.pl
+48 500 175 552 / www.labra.pl

