

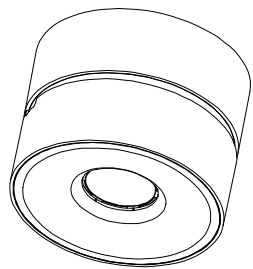
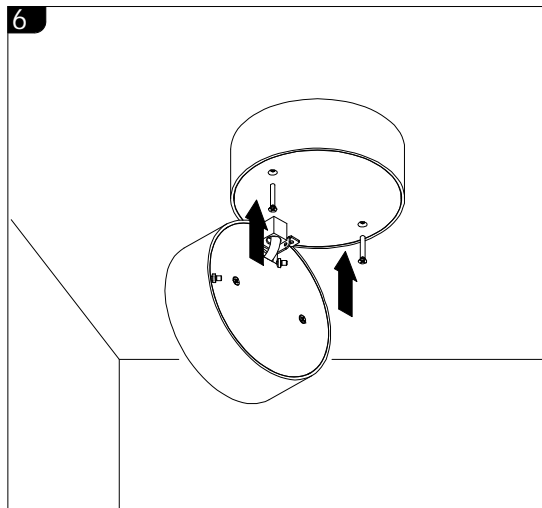
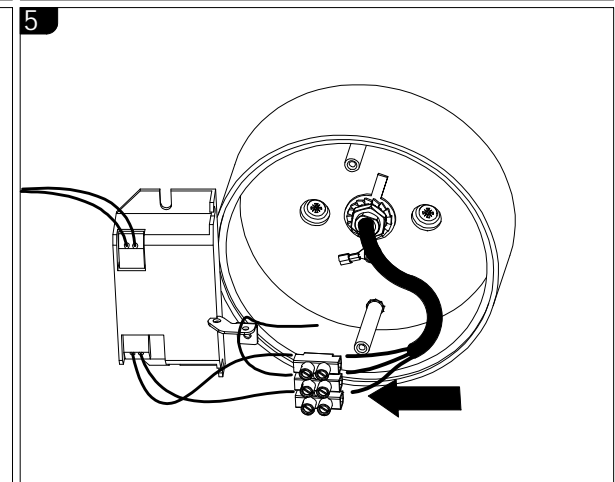
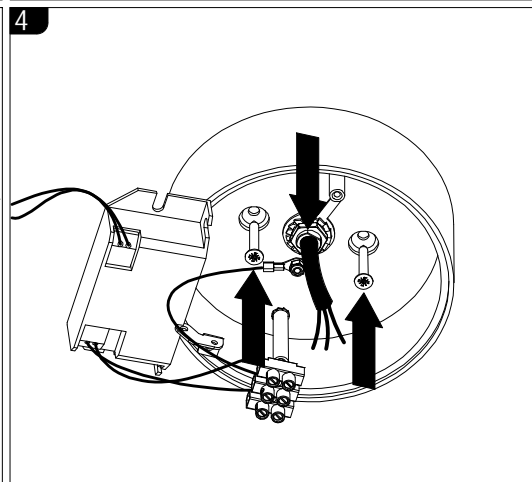
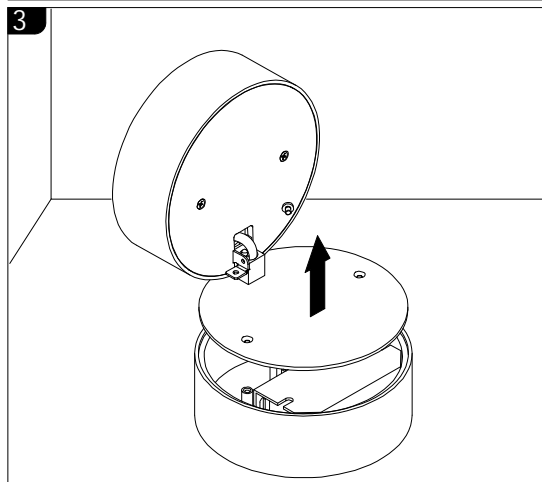
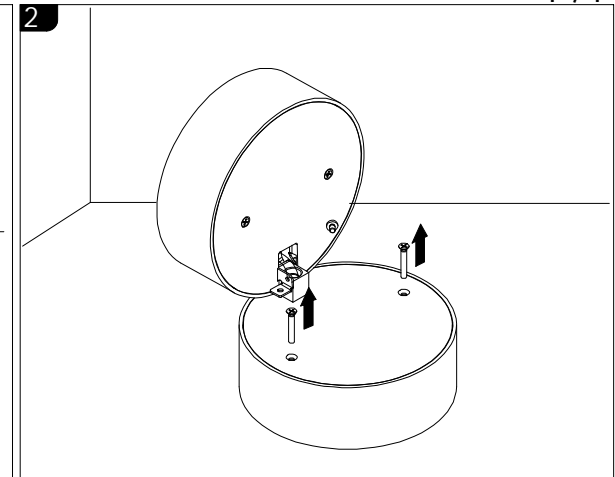
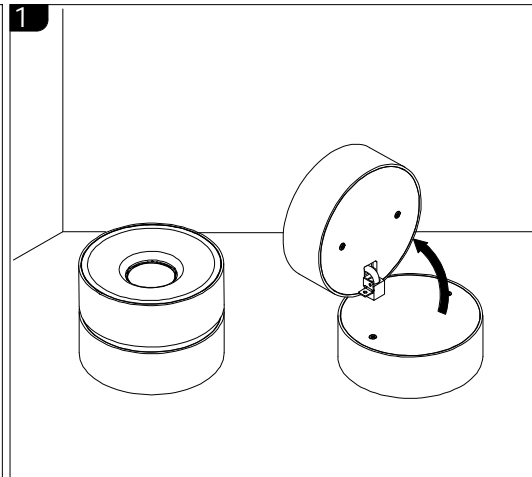
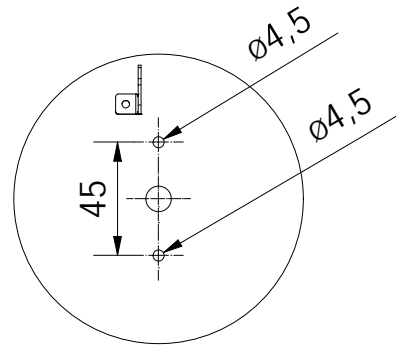
Geit Flat LED NT

IP20     

Podstawowe dane techniczne / Basic technical data:
230V 50/60 Hz
zasilacz w komplecie / driver included

Dotyczy / Refer to:
2.1915 (On-Off)
2.1916 (DALI)
2.1917 (PhaseCut)

WYMIARY MONTAŻOWE / MOUNTING DIMENSIONS



LABRA

LABRA Sp.z o.o.
biuro@labra.pl / export@labra.pl
+48 500 175 552 / www.labra.pl